



[Online Recurring Membership Sales](#)

[Sportsman Web Tournament Builder](#)

[Sportsman Web Help Center](#)

[Rainchecks for Golf](#)

[**CLICK HERE TO SEE OUR LATEST SPORTSMAN WEB FEATURES IN ACTION**](#)

Summer is officially here with outdoor pools and concession stands open, and programs in full swing. We've been busy onboarding new customers and continuing to add requested functionality to Sportsman. We look forward to feedback from those of you who tried out the new tournament scheduler in Sportsman Web this spring, and continued feedback from you as you schedule tournaments in your summer programs.

This summer, many of you will have opportunities to use event ticketing and mobile admittance for the first time at your summer concerts, rodeos and derbies. It's always great to hear about the positive ways you're using new Sportsman functionality to serve your communities.

We've invested a lot of time into fully automating the process of membership renewal in Sportsman Web. On that theme, ActivityReg now supports the sale of recurring memberships. It is completely possible for a patron to purchase a membership, use an electronic membership card and visit your facility without any interaction with the front desk. Then, the next month, the membership is auto-renewed and their credit card is charged seamlessly. Prorating is supported and special care is taken during the registration process to explain all the details. If this sounds interesting to you, check it out and let us know what you think.

To facilitate a better Sportsman Web experience, we have launched a new help center. It provides better search capability and is better oriented to step-by-step instructions for complex tasks. We see it as a major resource for training new employees and for easy to access instructions for processes you may not handle every day. The new system includes all of our existing training documents, and we're filling the gaps with additions based on the items you've searched for and questions you've asked. We're watching for searches with no results, and are taking requests for new documents you want written.

Many other enhancements are in the works but the one we're most excited for is the next version of ActivityReg. While this is an enormous project and I'm not able to provide estimated completion dates yet, it's important for you to know that active development is underway!

Stay cool, and we hope you have a great summer season.

- Charlie Warrell, Director of Development & CEO

Online Recurring Membership Sales on ActivityReg

The Recurring Membership Auto-Payment feature in Sportsman Web allows you to sell auto-renewing monthly, quarterly, or yearly memberships, then

seamlessly handles the process of renewing and collecting payment for you. Recurring memberships are a great source of income, and now you can sell them right from your ActivityReg site. This

functionality will save your staff time, and add a whole new level of convenience for your patrons. A patron can now purchase a membership, upload a photo, enter a card on file for recurring payment, and access their digital ID card all online. If you're ready to set up recurring membership auto-payment in Web, please give our support team a call at (801) 572-3570. We'll help you with the details and make sure your recurring payments are running smoothly.

Purchase A New Membership

Type: Membership

Name: Monthly Family All Center Pass

Length: Monthly

Resident: Yes (Edit in your account)

Membership Includes:

- Janet Doe
- Johnathan Doe

(Select Only 2)

[Add Family Member](#)

Automatically Renews: Yes
This monthly pass is an all-access family pass to all county locations

[Select This Membership >](#)

Tournament Scheduling in Sportsman Web

In case you missed it, this spring we released a valuable addition to your Sportsman toolbox, the tournament builder! Now you have the power to manage registrations, build rosters, schedule

Schedule Tournament

League: Major Division (ages 9-12)

Tournament Name: End of Season Majors

Start: 06/10/2023

End: 06/10/2023

Type: Single Elimination

Number of Teams: 8

[Reserve Game Dates/Times/Fields](#)

Included Teams (Drag to Select)

Team Name	Team Record
1 Eagles	0-0-0
2 Hawks	0-0-0
3 Thunder Birds	0-0-0
4 Tigers	0-0-0
5 Lions	0-0-0
6 Bears	0-0-0
7 Blue Jays	0-0-0
8 Owls	0-0-0

[Randomize](#)

Tournament Stats

Rounds	Games	Byes	Fields Reserved
3	7	0	0

[Preview Bracket](#)

Bracket Structure:

- Game A1: Eagles vs Owls
- Game A2: Tigers vs Lions
- Game A3: Hawks vs Blue Jays
- Game A4: Thunder Birds vs Bears
- Game B1: Winner of Game A1 vs Winner of Game A2
- Game B2: Winner of Game A3 vs Winner of Game A4
- Game C1: Winner of Game B1 vs Winner of Game B2

regular season games, and manage tournaments all in one place. No need for double entry any more. With Sportsman's

Tournament Scheduling function, you can reserve your fields and facilities and schedule your games, all in one fell swoop.

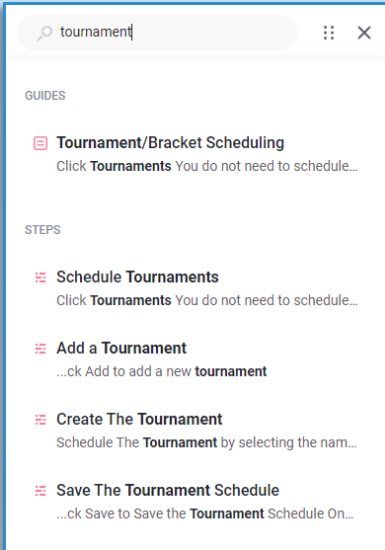
Your participants will be able to view tournament brackets, game

schedules and scores on your ActivityReg page in the Scores and Schedules section under Information. For instructions on how to set up tournaments in Sportsman Web, check out our Tournament/Bracket Scheduling guide: [Tournament/Bracket Scheduling](#)

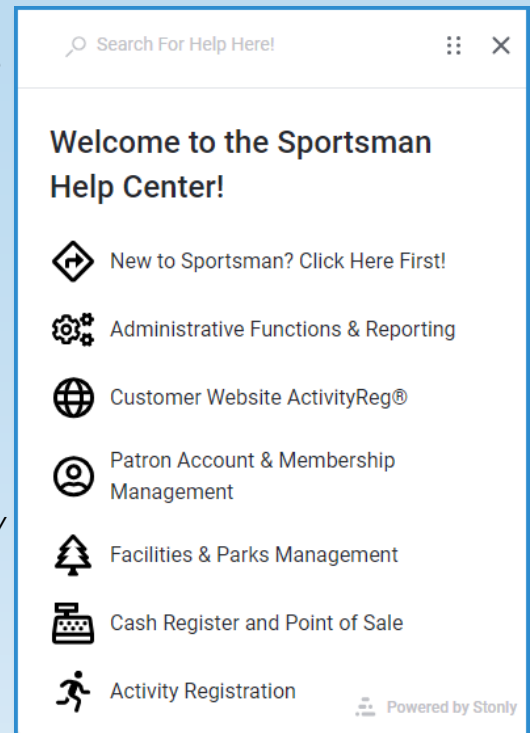
Sportsman Web Help Center

Looking for answers to life's burning questions? We're probably not going to be much help there... Unless those burning questions are about Sportsman! If that's the case, check out the new Help Center in Sportsman Web.

Click [Get Help](#) to follow along with training guides, request software enhancements, order hardware, download hardware drivers and more.

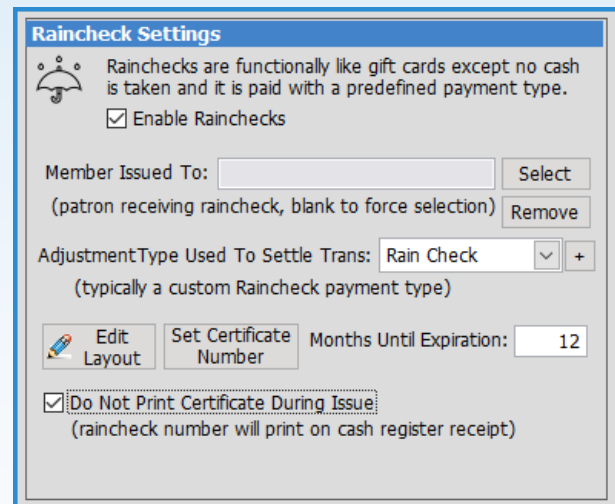
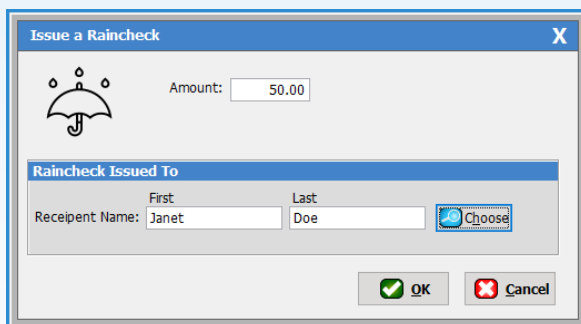


With improved search functionality, and easy step-by-step instructions, we've made finding the information you're looking for a snap. Use the *New to Sportsman* section to jumpstart Sportsman training for your new employees, check out a new feature you're interested in, or pull up a guide to give yourself a quick refresher on a procedure you're unsure of. Everything you need to become a true Sportsman expert is right at your fingertips.



Rainchecks for Golf

Has your Spring been as rainy as ours has? You won't hear complaints about the moisture from me, but I will say that our new raincheck feature is sure to get some miles this year.



This feature allows you to quickly issue a raincheck for a cancelled tee-time or activity. It's as simple as selecting Raincheck from your cash register screen, entering the amount, and handing a printed certificate or receipt to the soggy golfer. Your patron will present their receipt or raincheck certificate as payment for their next round of golf.

Don't miss out on the latest Sportsman SQL enhancements and updates.
Navigate to: File > Administration > Application Updates to download.